



The Greater Metropolitan Cemeteries Trust

Lasting memories, peaceful places.

Buxton Gum Lawn premium monumental area

COMMUNITY UPDATE | AUGUST 2019

Background

Lilydale Memorial Park is located at 126-128 Victoria Road, Lilydale and is managed by The Greater Metropolitan Cemeteries Trust (GMCT).

GMCT is planning to construct stage one which includes 180 new premium monumental graves in the Buxton Gum Lawn area at Lilydale Memorial Park. These new plots in the Buxton Gum Lawn area will have common foundations.

As part of the future development a carpark will be constructed and a pathway connection towards the administration building and the crematorium.

What will be the impact on local residents and nearby streets?

All works are confined to within the cemetery grounds within Lilydale Memorial Park.

How much will these ROIs cost?

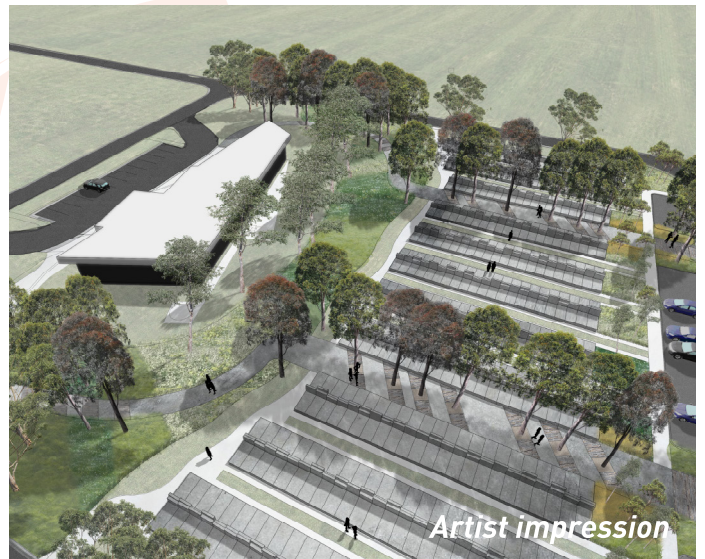
Cemetery fees are determined according to a cost-recovery model, which accounts for the cost of construction, as well as GMCT's perpetual maintenance obligations.

The fees charged for rights of interment at GMCT cemeteries help ensure GMCT can maintain each of the cemeteries it is responsible for in perpetuity. The perpetual maintenance obligations of Class A cemetery trusts are outlined in the Cemeteries and Crematoria Act 2003 (Vic).

Fees for the developments outlined in this update will be approved by the Department of Health and Human Services through a formal process.

Details of the process can be found on the Vic Health website at:

www2.health.vic.gov.au/about/publications/policiesandguidelines/guidelines-for-class-a-cemetery-trust-fee-setting



Right of interment in Buxton Gum Lawn area

The proposed price for each right of interment in Buxton Gum Lawn area at Lilydale Memorial Park is \$11,275.00.

Where can I find more information?

Information regarding the release of these graves for purchase will be available through the GMCT website, under the community updates page.

Interested members of the public can register to receive GMCT's monthly newsletter for more information and to stay up to date on our news.

Register at <http://www.gmct.com.au/media-news-events/newsletters/>

www.gmct.com.au
1300 022 298